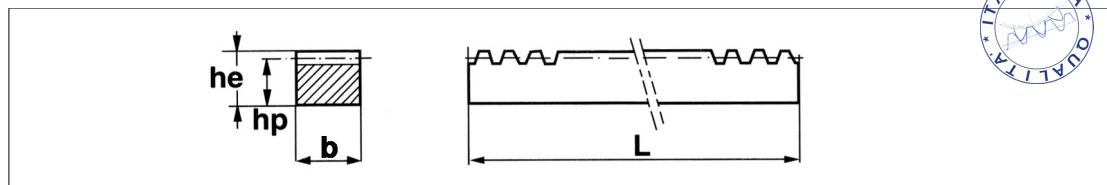


## Cremagliere - Racks - Zahnstangen

| Codice     | Modulo | b x he<br>(mm x mm) | hp<br>(mm) | L<br>(mm) | Peso<br>(kg) |
|------------|--------|---------------------|------------|-----------|--------------|
| CR 011000  | M 1    | 15 x 15             | 14,0       | 1000      | 0,75         |
| CR 012000  | M 1    | 15 x 15             | 14,0       | 2000      | 1,50         |
| CR 013000  | M 1    | 15 x 15             | 14,0       | 3000      | 2,25         |
| CR 0151000 | M 1,5  | 17 x 17             | 15,5       | 1000      | 2,05         |
| CR 0152000 | M 1,5  | 17 x 17             | 15,5       | 2000      | 4,10         |
| CR 0153000 | M 1,5  | 17 x 17             | 15,5       | 3000      | 6,15         |
| CR 021000  | M 2    | 20 x 20             | 18,0       | 1000      | 2,75         |
| CR 022000  | M 2    | 20 x 20             | 18,0       | 2000      | 5,50         |
| CR 023000  | M 2    | 20 x 20             | 18,0       | 3000      | 8,25         |
| CR 0251000 | M 2,5  | 25 x 25             | 22,5       | 1000      | 4,00         |
| CR 0252000 | M 2,5  | 25 x 25             | 22,5       | 2000      | 8,00         |
| CR 0253000 | M 2,5  | 25 x 25             | 22,5       | 3000      | 12,00        |
| CR 031000  | M 3    | 30 x 30             | 27,0       | 1000      | 6,50         |
| CR 032000  | M 3    | 30 x 30             | 27,0       | 2000      | 13,00        |
| CR 033000  | M 3    | 30 x 30             | 27,0       | 3000      | 19,50        |
| CR 041000  | M 4    | 40 x 40             | 36,0       | 1000      | 11,00        |
| CR 042000  | M 4    | 40 x 40             | 36,0       | 2000      | 22,00        |
| CR 043000  | M 4    | 40 x 40             | 36,0       | 3000      | 33,00        |
| CR 051000  | M 5    | 50 x 50             | 45,0       | 1000      | 16,00        |
| CR 052000  | M 5    | 50 x 50             | 45,0       | 2000      | 32,00        |
| CR 053000  | M 5    | 50 x 50             | 45,0       | 3000      | 48,00        |
| CR 061000  | M 6    | 60 x 60             | 54,0       | 1000      | 24,50        |
| CR 062000  | M 6    | 60 x 60             | 54,0       | 2000      | 49,00        |



angolo di pressione – pressure angle – Eingriffswinkel

20°

materiale – material – Material

C 40 – C 45

trafilato – drawn – gezogen

h11